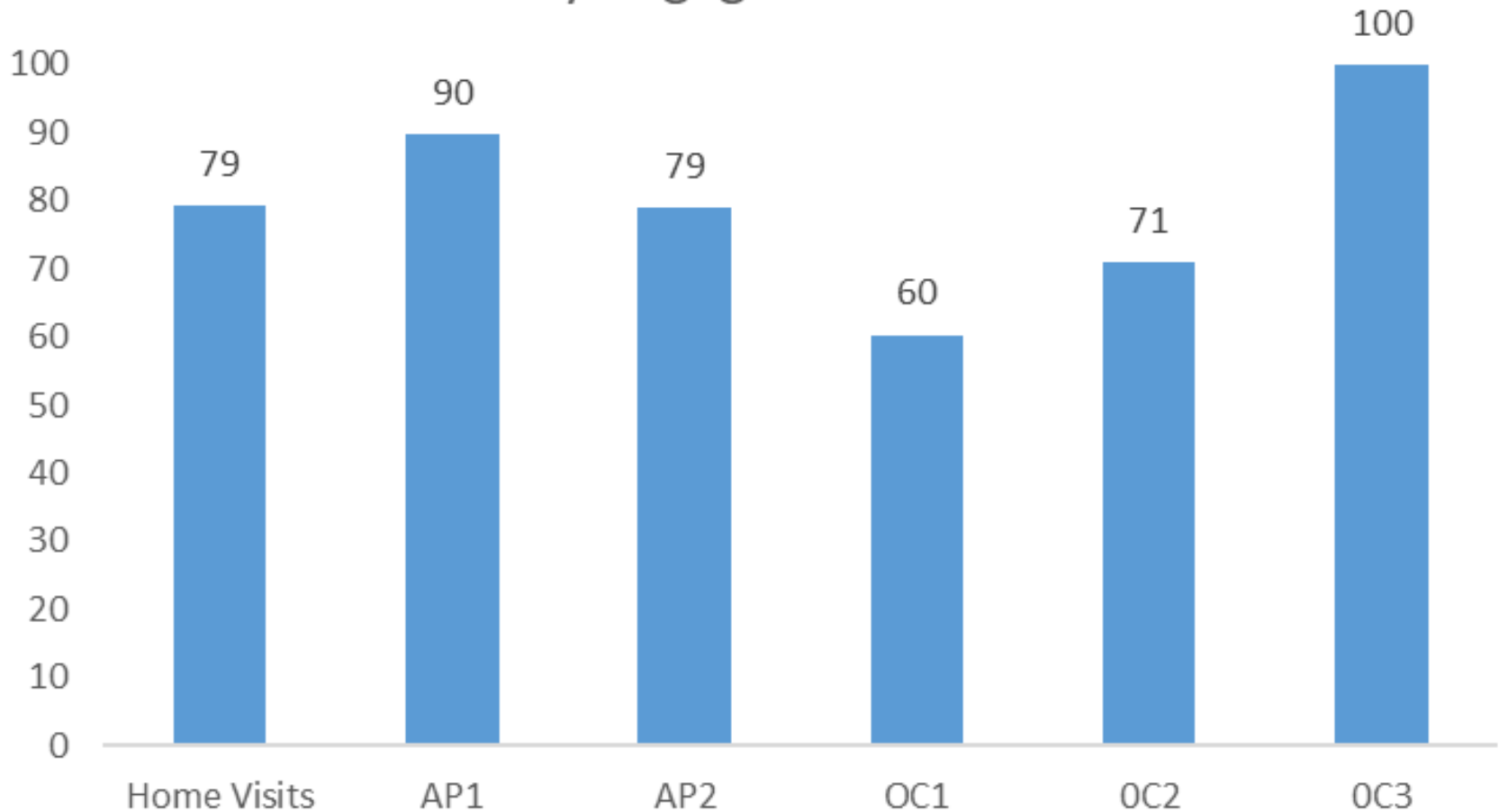


# EW Stokes Brookland SY 18-19 Data

October 4, 2019

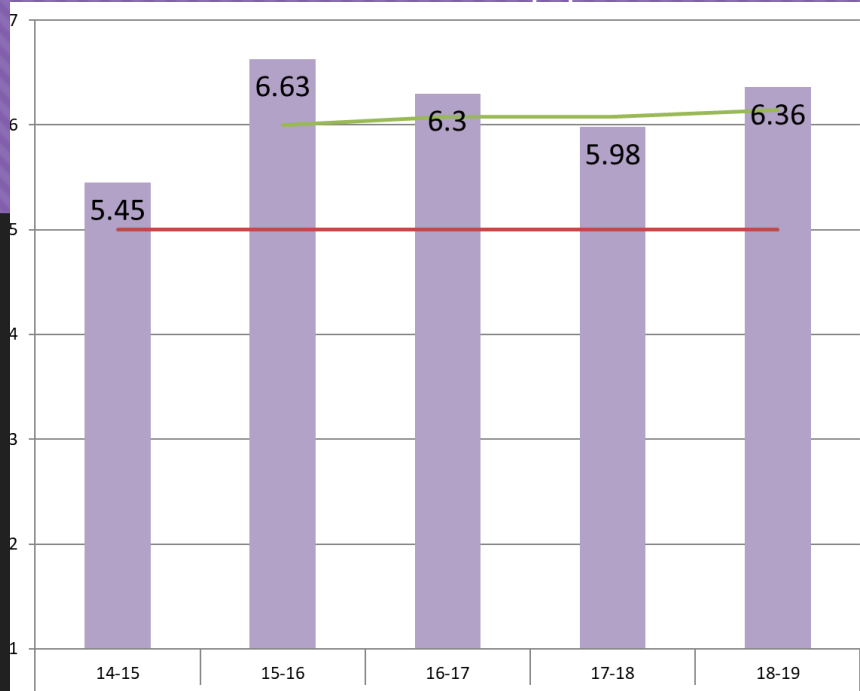
## Family Engagement Results



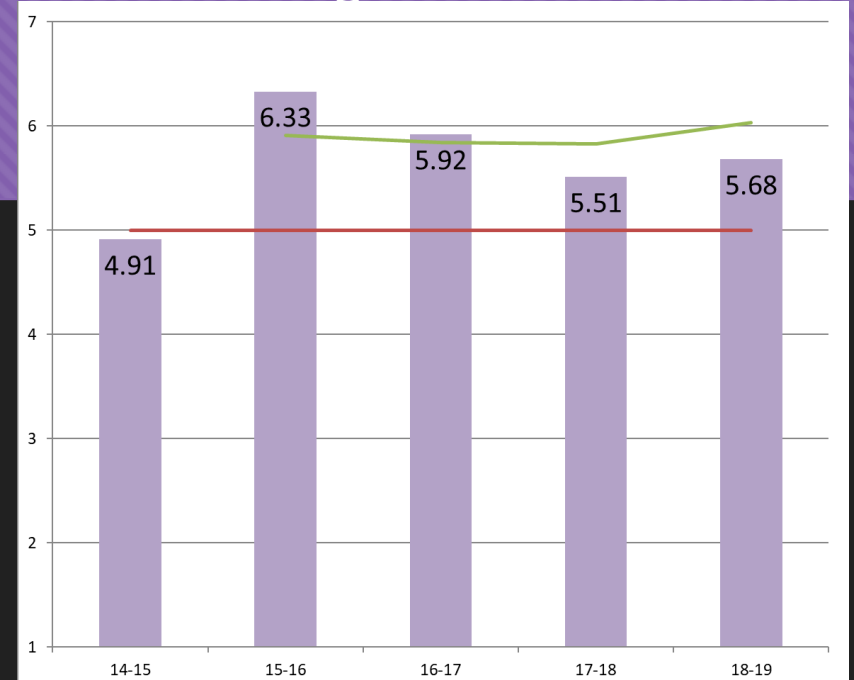
AP = Academic Partnering (Parent Teacher Conferences)  
OC = Ongoing Communication for each trimester

# Pre-K CLASS Observations

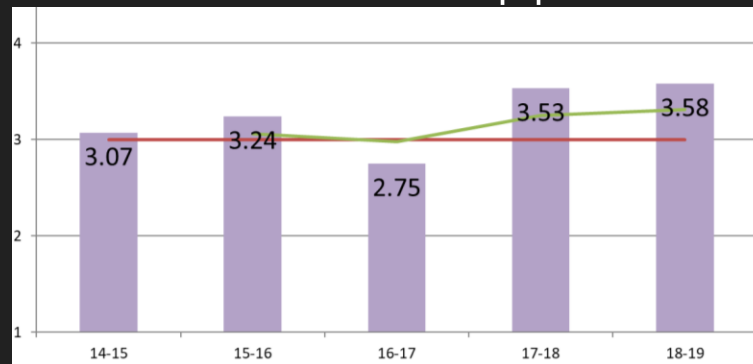
## Emotional Support



## Class Organization



## Instructional Support

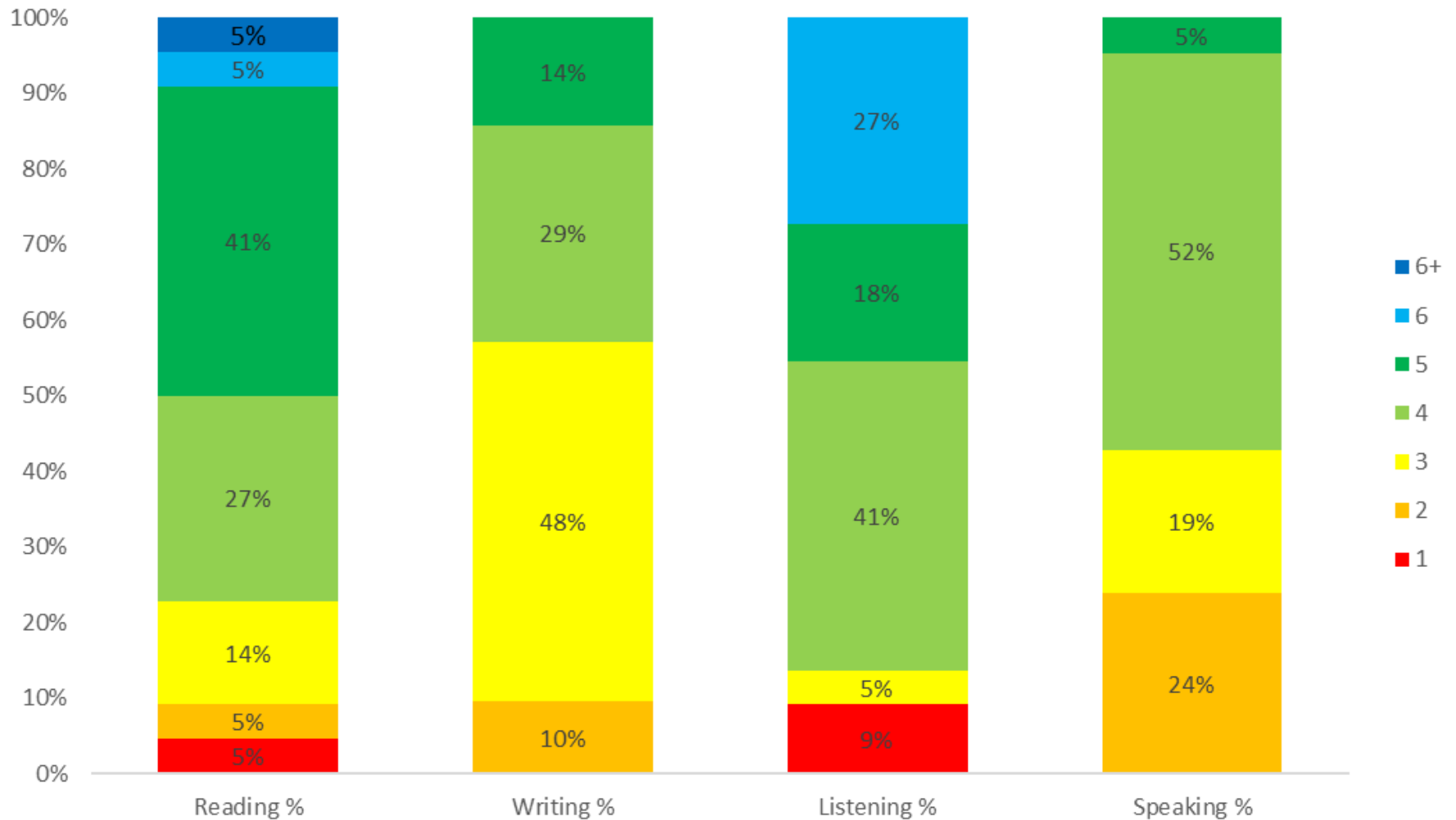


Score  
Threshold for Quality  
PCS Average

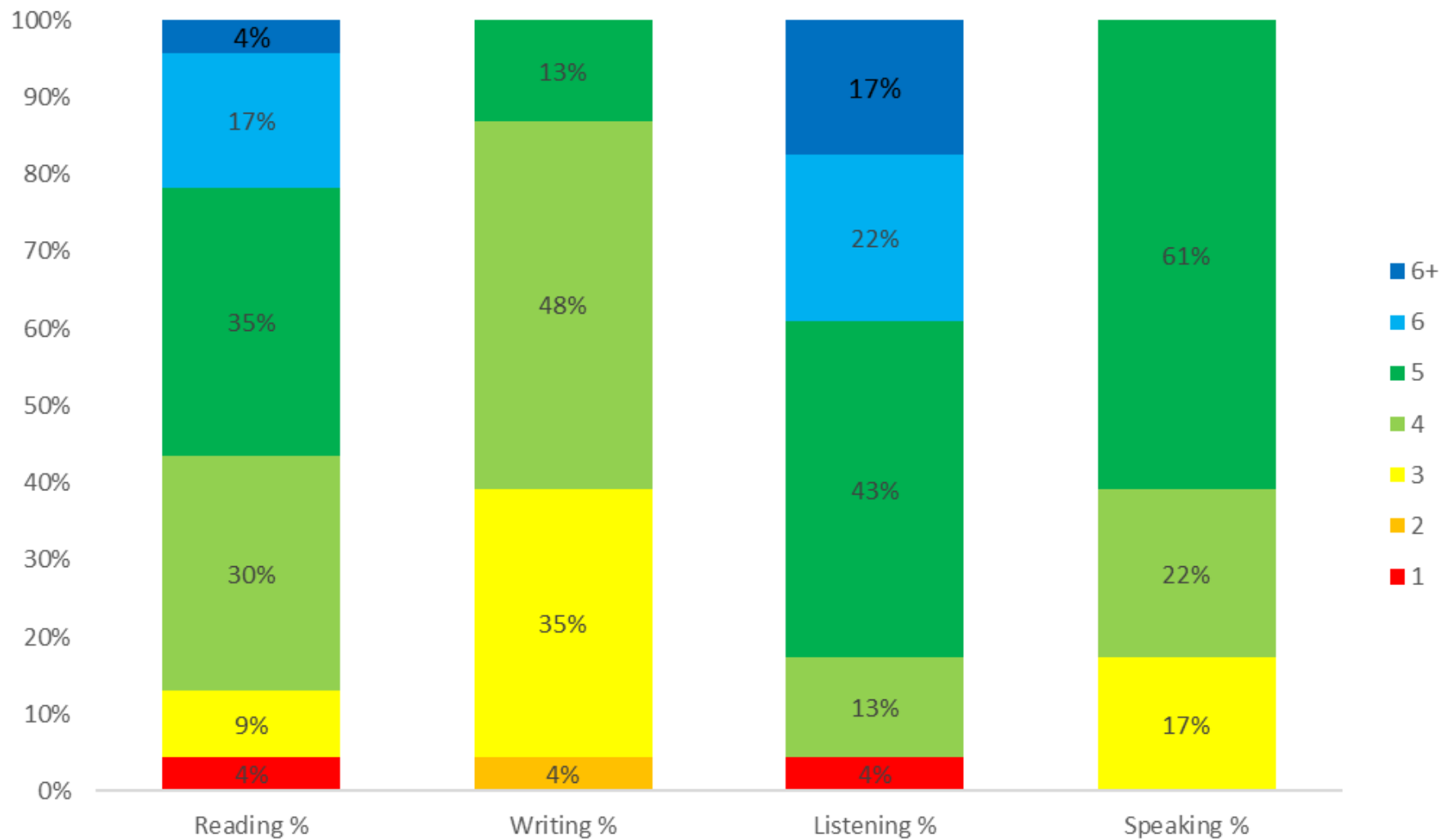
# STAMP Benchmark Guide

Writing and Speaking Level Key			Reading and Listening Level Key	
Novice	Intermediate	Advanced	Novice	Intermediate
(1) Novice-Low	(4) Intermediate-Low	(7) Advanced-Low	(1) Novice-Low	(4) Intermediate-Low
(2) Novice-Mid	(5) Intermediate-Mid		(2) Novice-Mid	(5) Intermediate-Mid
(3) Novice-High	(6) Intermediate-High		(3) Novice-High	(6) Intermediate-High
				(6+) Pre-Advanced

## 5S 18-19 STAMP Results

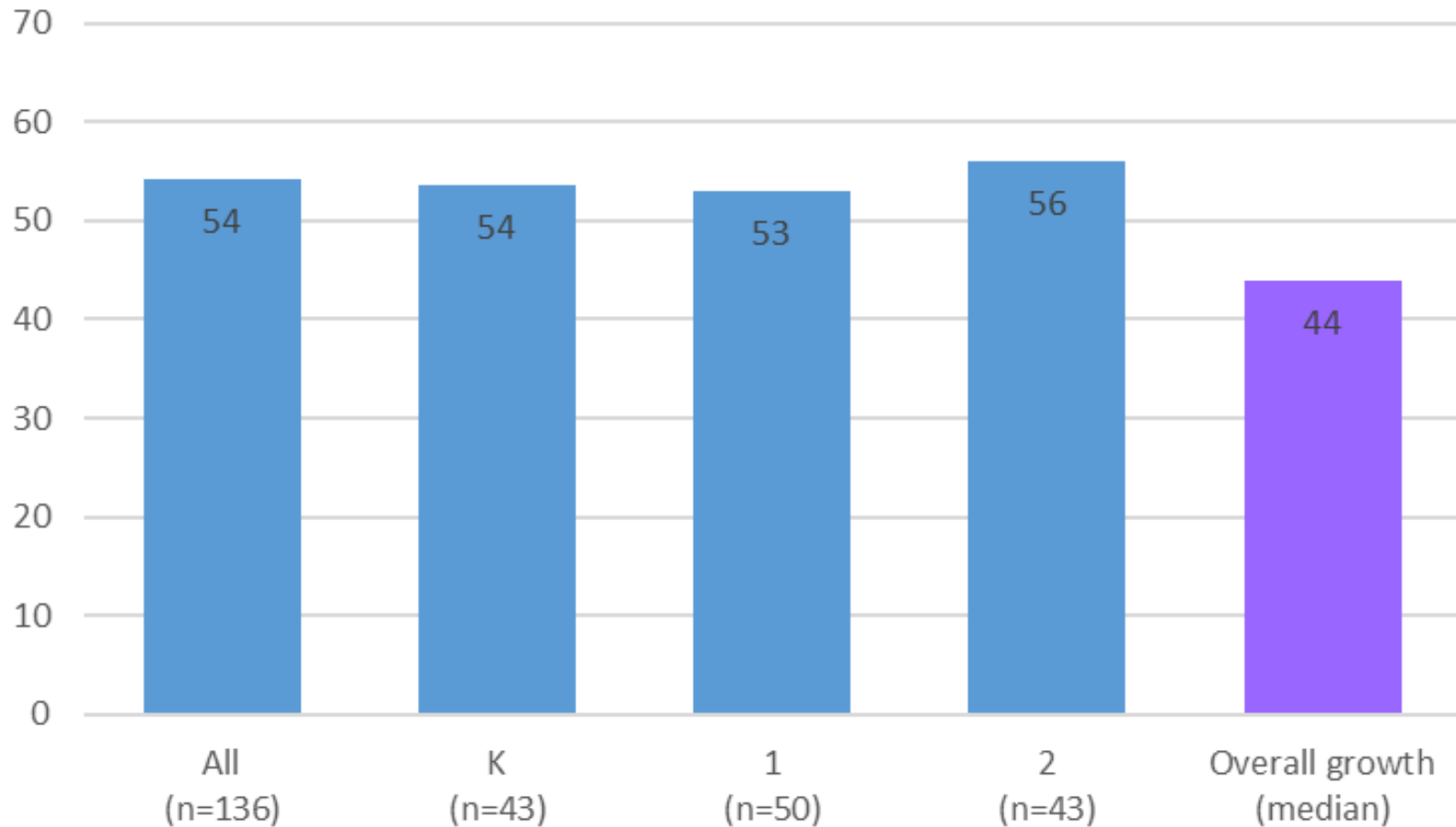


## 5F 18-19 STAMP Results



## T3 NWEA Reading Achievement Scores

% at or above 50th percentile

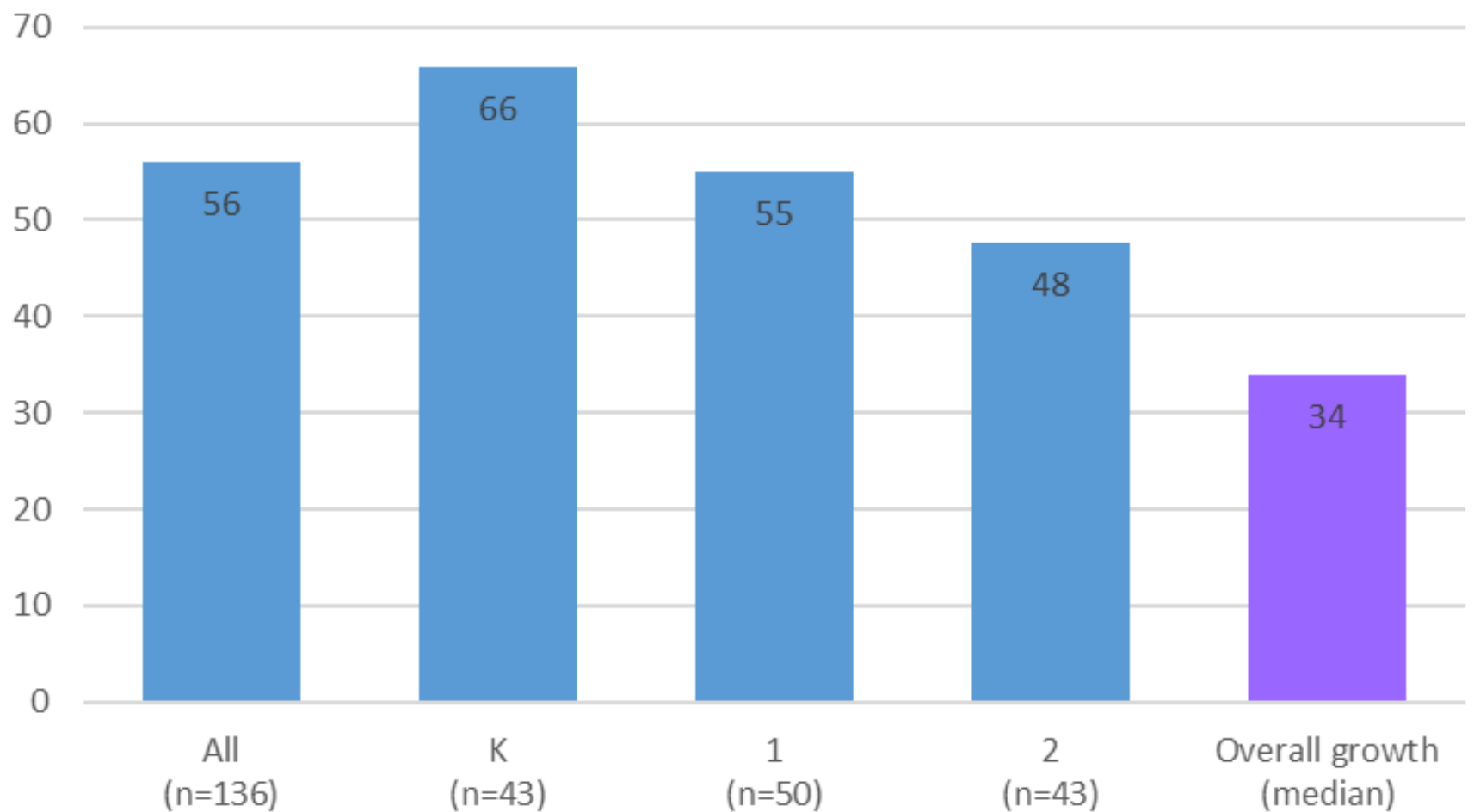


Note about growth (purple)

- Interpret median=50 to mean that students at Stokes grew at the same rate as a typical student nationally.
- We want to aim for greater than 50, meaning growth that is greater than typical NWEA tester

## T3 NWEA Math Achievement Scores

% at or above 50th percentile



# Assessment Resources

- STAMP: <https://avantassessment.com/avant-stamp-4se-test-taker-parent-guide>
- NWEA: <https://www.nwea.org/parent-toolkit/>

# F & P English Reading Level Results 18-19

% of Students At or Above Grade Level

	14-15 T3	15-16 T3	16-17 T3	17-18 T3	18-19 T3
ALL Students	82%	88%	91%	88%	86%

	18-19 T3
ALL	86%
K	85%
1	71%
2	71%
3	96%
4	95%
5	91%

More about F&P:

<https://www.fountasandpinnell.com/bas/>

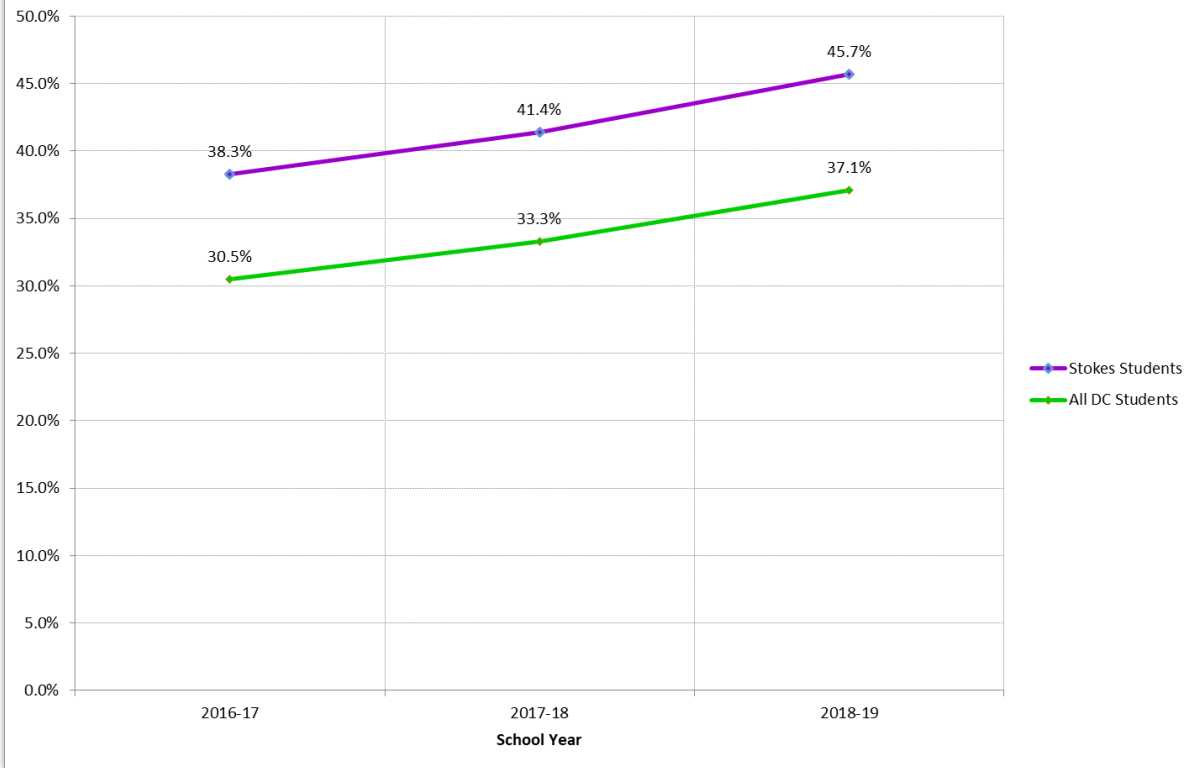
Text level scores A-Z:

<https://www.fountasandpinnell.com/textlevelgradient/>

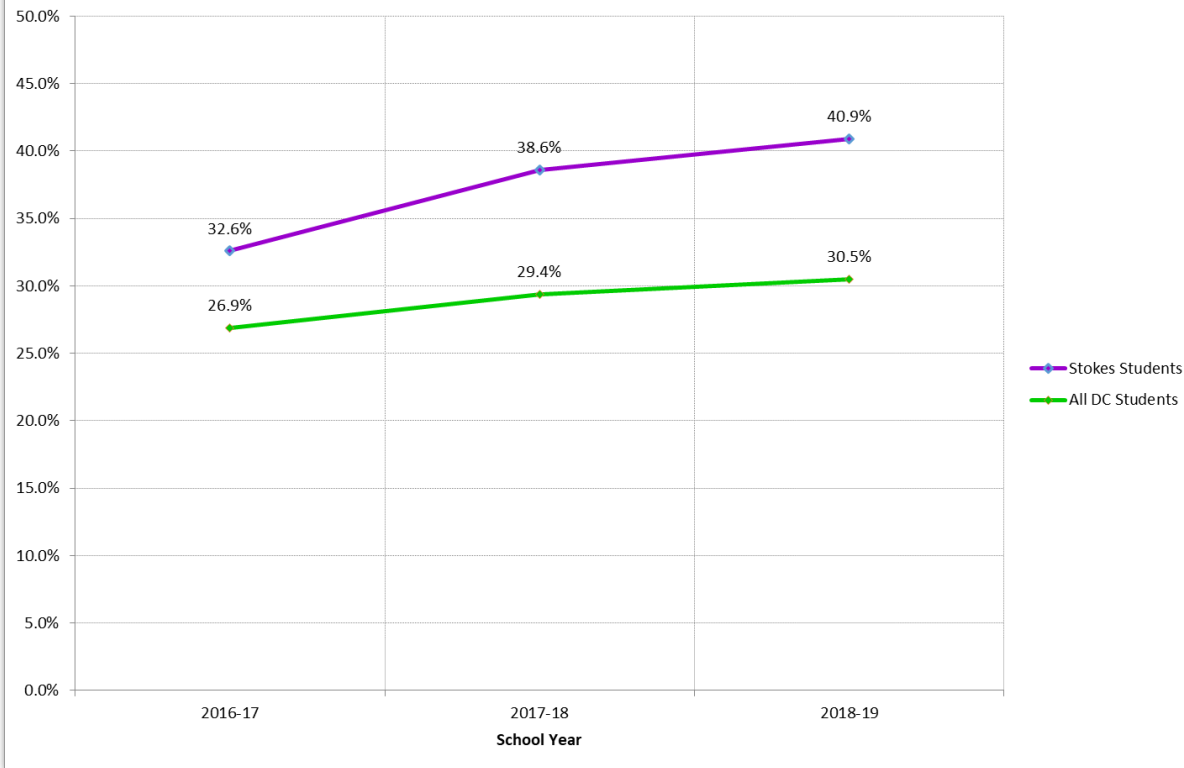
# PARCC Performance Levels

- Level 1: Did not yet meet expectations
  - Level 2: Partially met expectations
  - Level 3: Approached expectations
- 
- Level 4: Met expectations
  - Level 5: Exceeded expectations

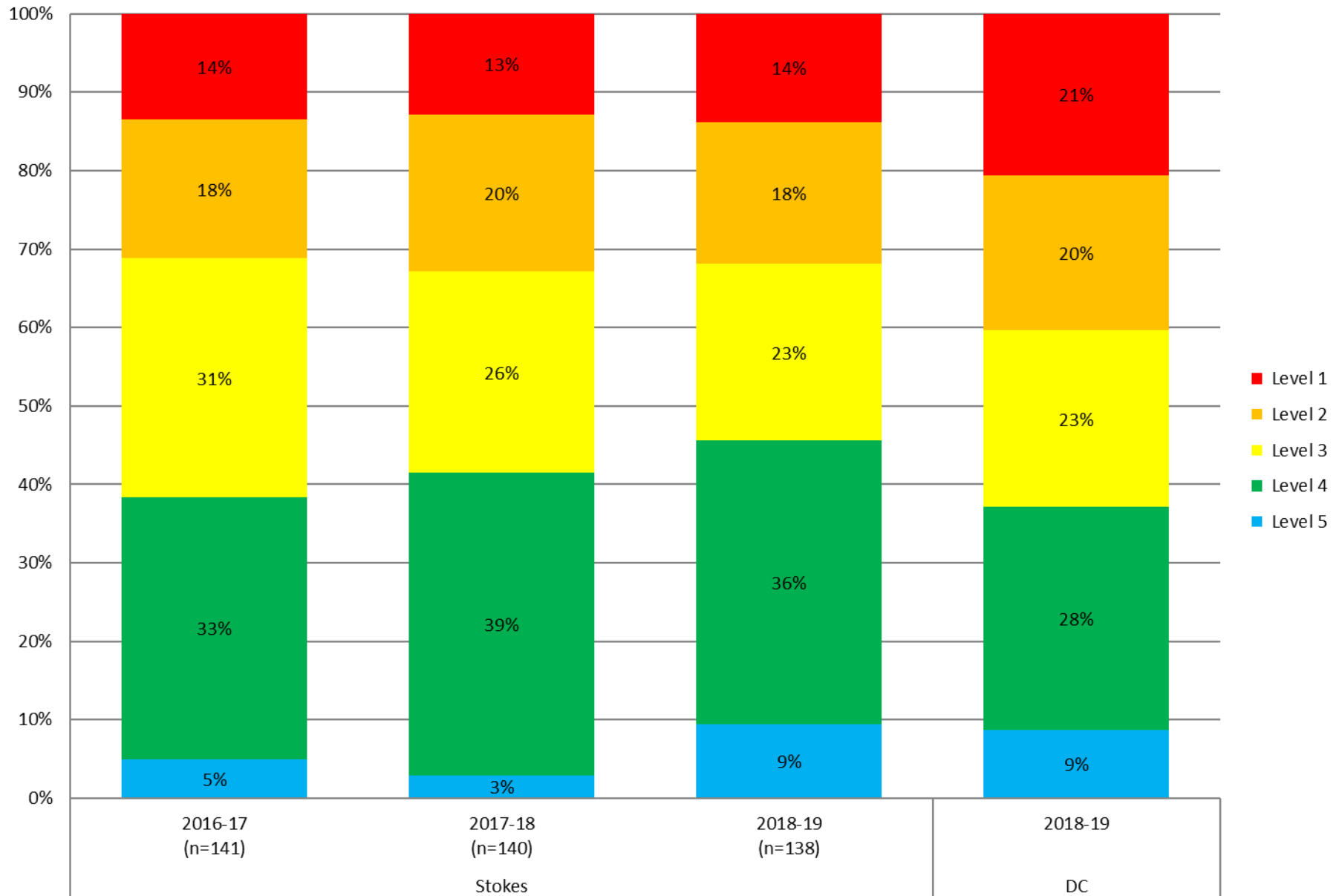
### ELA PARCC Results: Percentage of Students Meeting or Exceeding Expectations



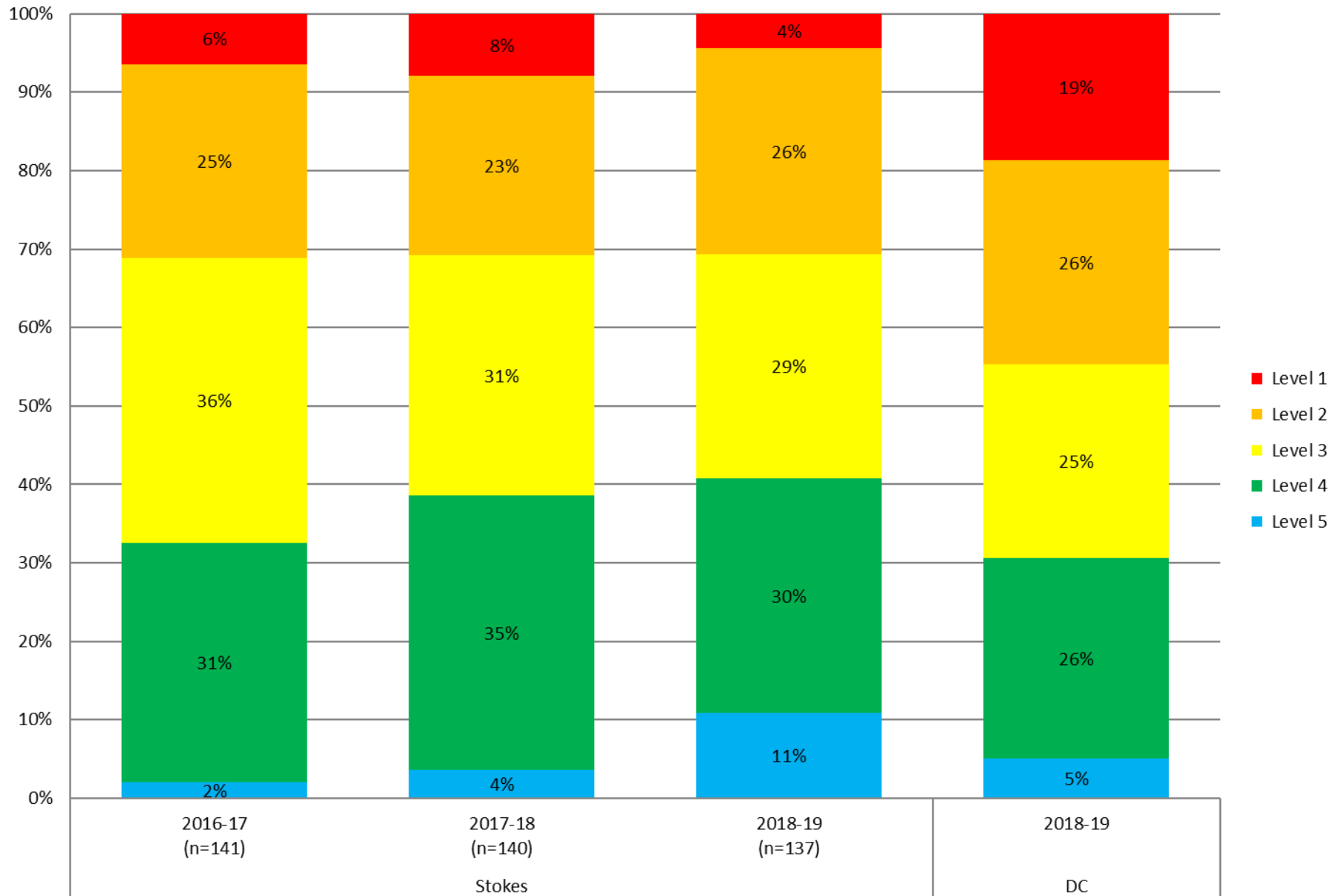
### Math PARCC Results: Percentage of Students Meeting or Exceeding Expectations



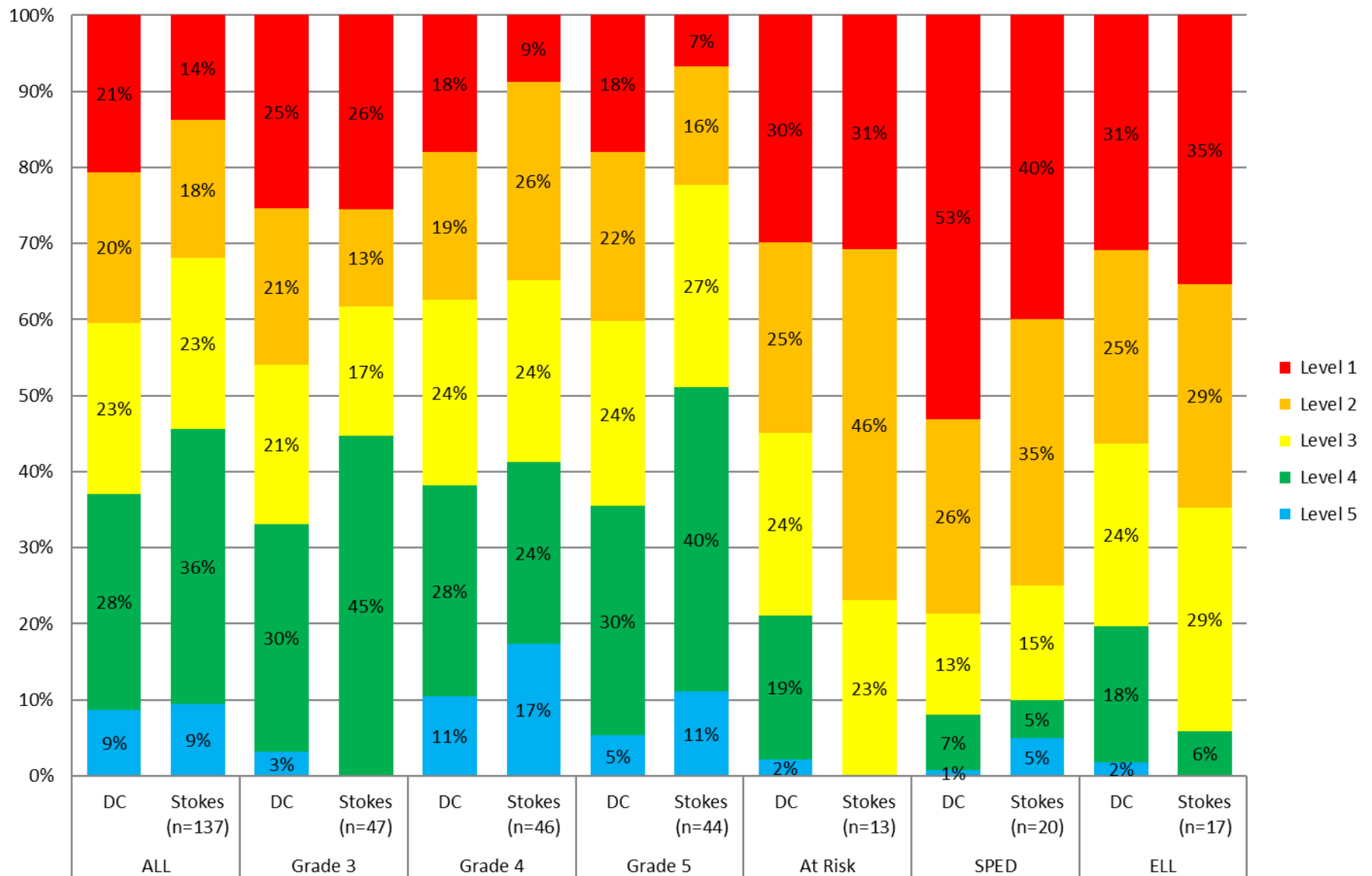
## Schoolwide Historical ELA Data



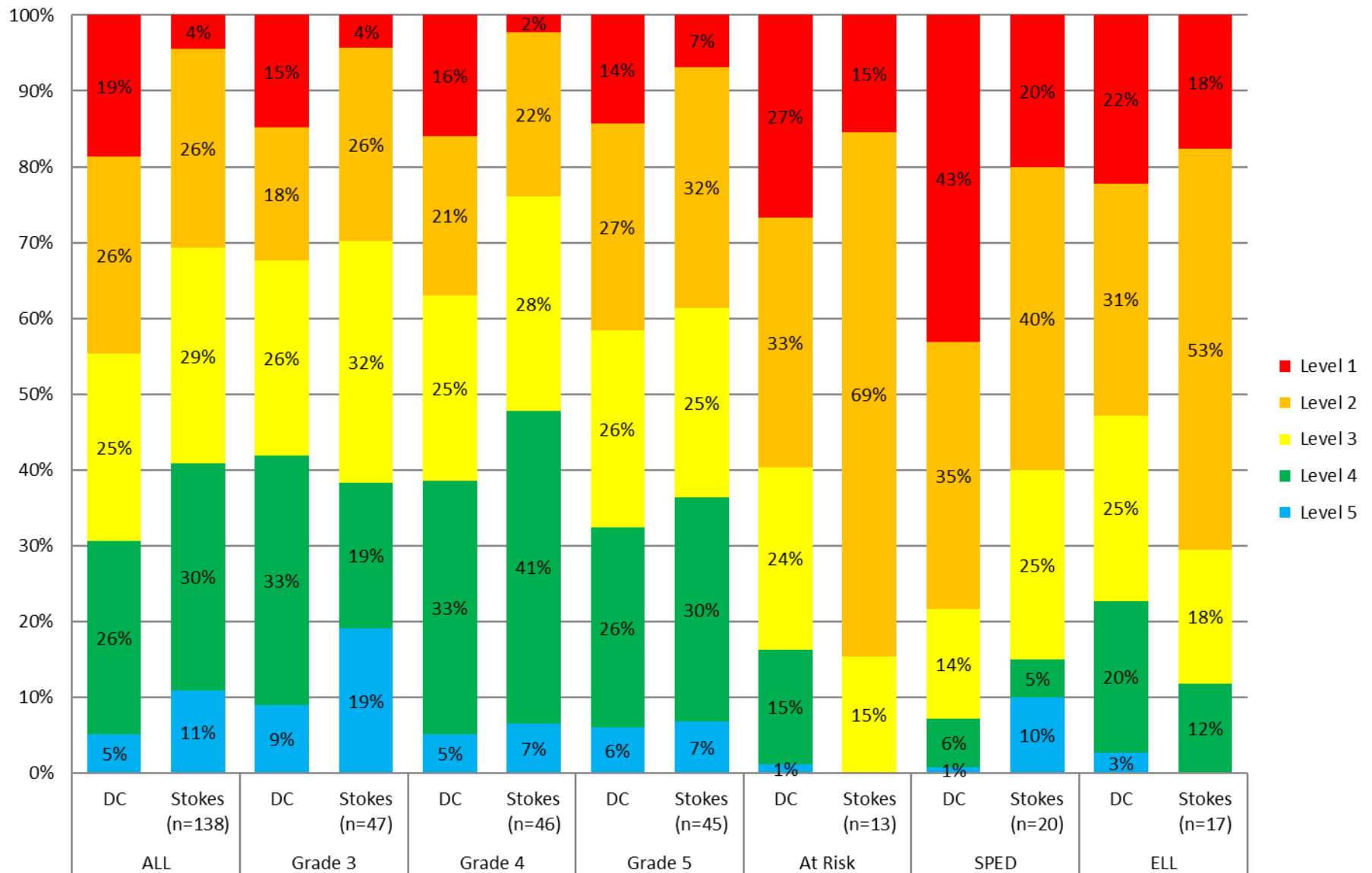
## Schoolwide Historical Math Data



# EW Stokes & DC PARCC 18-19 ELA Results

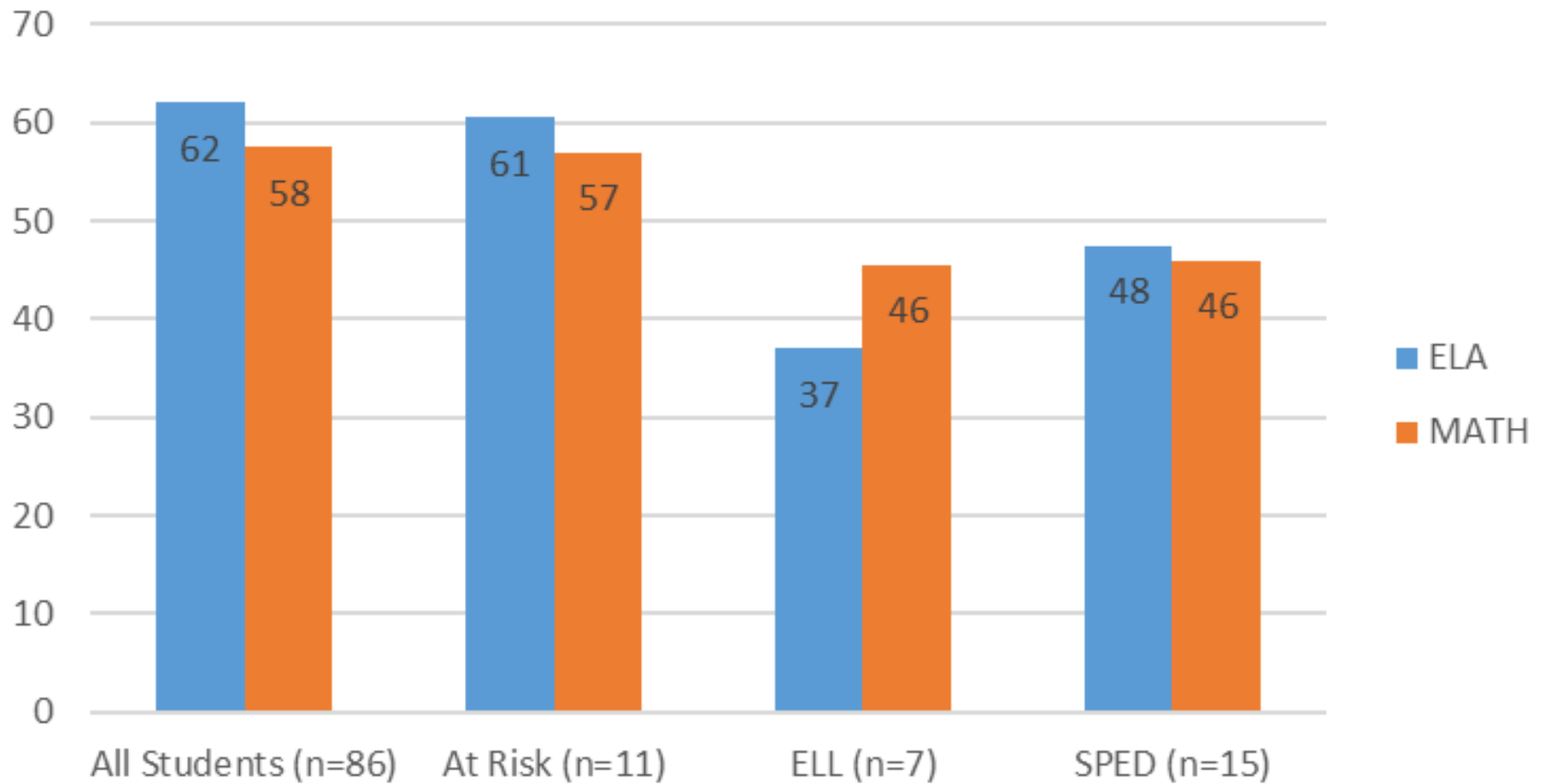


# EW Stokes & DC PARCC 18-19 Math Results



## 4<sup>th</sup> and 5<sup>th</sup> graders

### PARCC Student Growth %



# Explore more PARCC Data

- DC Schools: <http://results.osse.dc.gov/state/DC/assessment/1/proficiency/4>
- EW Stokes: <http://results.osse.dc.gov/school/159/>
- Parent resources: <https://parcc-assessment.org/parent-resources/>

# Instructional Priorities SY 19-20

## Data Analysis

- Improving the use of data to inform instruction

## Social Justice

- Implementing a social justice action component within a UOI

## IB

- Recording and reflecting upon units to ensure continual improvement of IB Programme of Inquiry

## Target Language

- Establishing and maintaining a language immersion context
- Using the Stokes language progression path to develop assessments that measure student proficiency

# Supporting Priorities



Coaching



Improved SST Process



Professional Development



Guiding Principles Documents Development



Structured Grade Level IB & Data Meetings

Questions?

